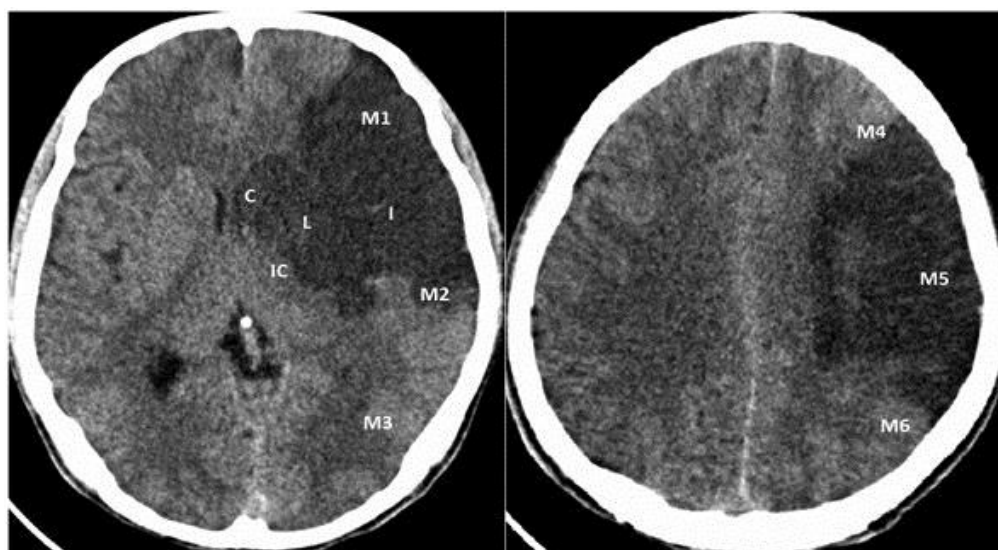


## ***Automatic Early Ischemic Changes Detection Using Convolutional Neural Networks in Patients with Acute Ischemic Stroke***

Stroke is the second most common cause of death worldwide. About 80% of strokes are caused by focal cerebral ischemia [1]. The rapid administration of intravenous recombinant tissue-type plasminogen activator to appropriate patients is one of the main treatments for acute ischemic stroke. A fast restoration of blood flow in ischemic stroke patients has a huge effect in reducing long-term morbidity [2]. The Alberta Stroke Program Early CT Score (ASPECTS) is a 10-point CT scan score designed to quantify early ischemic changes in patients with acute ischemic stroke [3]. This simple and reliable score is used to predict functional outcome, risk of hemorrhage and to facilitate treatment selection [4], [5] and [6].

The score divides the MCA territory into 10 regions of interest (Figure 1) and therefore 10 points are allocated for the MCA territory. For each region presenting focal swelling or parenchymal hypoattenuation 1 point is subtracted from the score. Thus, a normal scan should receive an ASPECTS score of 10, while a score less than or equal to 7 indicates worse functional outcome. Patients with ASPECTS score above 6 are good candidates for thrombectomy. A score of zero indicates diffuse ischemic involvement throughout the MCA territory [4].



**Figure 1 - Aspects Score Regions of Interest**

However, the assessment of early ischemic changes requires training, is time consuming and may be prone to errors (false-positives) [4]. The prognosis value of the ASPECTS score and treatment are both time dependent. Therefore, a faster and more

accurate automatic estimation of ASPECTS score can have a huge impact in patient outcome.

Recently, in the field of Deep Learning, the Convolutional Neural Networks (CNNs) have shown state-of-the-art results regarding image classification and segmentation. These networks are composed of layers capable of learning representations of data with multiple levels of abstractions. An important aspect of deep learning is that the features that compose these layers are learned from data, and do not need to be designed by a human. Therefore, deep learning approaches can save time and effort by extracting features by themselves. CNNs have shown great potential for medical applications like brain tumor segmentation [7], liver tumor segmentation [8], pancreas segmentation [9] and in a computer-aided diagnosis applications [10].

As a member of the Biomedical Engineering department you will have the opportunity to work with the automatic quantification of the ASPECTS score using Convolutional Neural Networks and CT scan images for predicting patient outcome. Previous programming knowledge is required.

### Contact

Lucas Ramos  
Biomedical Engineering & Physics

[l.a.ramos@amc.uva.nl](mailto:l.a.ramos@amc.uva.nl)

Henk Marquering  
Biomedical Engineering & Physics /  
Radiology & Nuclear Medicine  
[h.a.marquering@amc.uva.nl](mailto:h.a.marquering@amc.uva.nl)

### References

- [1] H. B. Van Der Worp, D. Ph, and J. Van Gijn, "Acute Ischemic Stroke," 2007.
- [2] W. J. Powers *et al.*, "AHA / ASA Guideline 2015 American Heart Association / American Stroke Association Focused Update of the 2013 Guidelines for the Early Management of Patients With Acute Ischemic Stroke Regarding Endovascular Treatment," pp. 3020–3036, 2015.
- [3] J. H. W. Pexman *et al.*, "Use of the Alberta Stroke Program Early CT Score ( ASPECTS ) for Assessing CT Scans in Patients with Acute Stroke," vol. 117, no. September, pp. 1534–1542, 2001.
- [4] V. Puetz, I. Dzialowski, M. D. Hill, and A. M. Å. Demchuk, "Topical review The Alberta Stroke Program Early CT Score in clinical practice : what have we learned ?," vol. 4, no. October, pp. 354–364, 2009.
- [5] C. Tomography *et al.*, "Alberta Stroke Program Early Computed Tomographic Scoring Performance in a Series of Patients Undergoing," 2014.
- [6] O. A. Berkhemer *et al.*, "Impact of Pretreatment Noncontrast CT Alberta Stroke

Program Early CT Score on Clinical Outcome After - Arterial Stroke Therapy,” pp. 746–752, 2014.

- [7] M. Havaei, A. Davy, and D. Warde-Farley, “Brain Tumor Segmentation with Deep Neural Networks,” *arXiv Prepr. arXiv ...*, p. 13, 2015.
- [8] W. Li, F. Jia, and Q. Hu, “Automatic Segmentation of Liver Tumor in CT Images with Deep Convolutional Neural Networks,” *J. Comput. Commun.*, vol. 3, no. November, pp. 146–151, 2015.
- [9] H. Roth and A. Farag, “Deep convolutional networks for pancreas segmentation in CT imaging,” *SPIE Med. Imaging*, vol. 9413, no. April, p. 39, 2015.
- [10] H. C. Shin *et al.*, “Deep Convolutional Neural Networks for Computer-Aided Detection: CNN Architectures, Dataset Characteristics and Transfer Learning,” *IEEE Trans. Med. Imaging*, vol. 35, no. 5, pp. 1285–1298, 2016.