



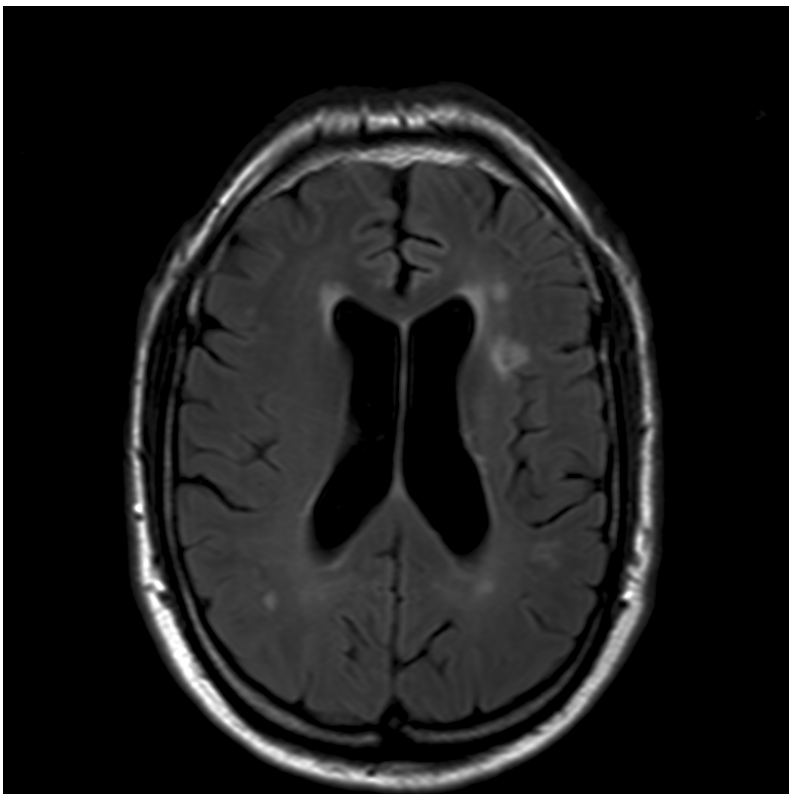
Amsterdam  
Lysosome Center



Academisch Medisch Centrum  
Universiteit van Amsterdam

# SPHINX Education Program: Cerebral manifestations in Fabry disease

*"A practical, interactive workshop"*



26/27 January 2012  
Ziedses des Plantenzaal  
AMC

---

---

Welcome to this SPHINX Education Program.

SPHINX, the Amsterdam Lysosome Center is located at the AMC and aims to educate physicians and researchers in the field of rare lysosomal storage disorders. This course on cerebral aspects of Fabry disease has an informal and interactive character in order to:

- Learn from the experience of experts in the field of neurological manifestations in Fabry disease
- Challenge the experts and your colleagues with your opinion
- Ask the experts for advice on your clinical case(s)

**Objectives:**

1. To update knowledge on central nervous system pathology in Fabry disease, with emphasis on pathophysiology and imaging;
2. To enhance exchange of experiences for the benefit of patient management;
3. To support radiological assessment in your own practice;
4. To build a network for future collaboration or consultation.

**Targeted audience:** Physicians or researchers with an interest in the management of Fabry disease. Maximum number of participants = 30.

**Evaluation:** After filling out an evaluation form, the participants will receive a certificate of attendance of the course.

**Accreditation:** EACCME accreditation has been applied for.

**Costs:** Course, stay and dinner are for free. Flight should be arranged by participant.

**Application:** Please send your application for attendance before December 31, 2011 to: [m.biegstraaten@amc.uva.nl](mailto:m.biegstraaten@amc.uva.nl). Your application should include full name, medical specialty, name of institute, contact details and a brief motivation why you think that this course is of interest to you.

**Case histories:** Physicians are encouraged to contribute case histories for discussion. Please send your contribution and your questions 2 weeks before the start of the course to: [m.biegstraaten@amc.uva.nl](mailto:m.biegstraaten@amc.uva.nl). We request that you restrict your presentation to 15 minutes per case.

During the course, all participants will receive a USB stick with relevant literature.

**Organizing Committee**

Mario Maas, MD, PhD, supervisor

Carla Hollak, MD, PhD, lecturer

Gabor Linthorst, MD, PhD, lecturer

Leonardo Vedolin, MD, PhD, lecturer

Andreas Fellgiebel, MD, PhD, lecturer

Michael Beck, MD, PhD, lecturer

Marieke Biegstraaten, MD, PhD, coordinator, lecturer

---

---

## **Arrival 26 January 2012**

- 14.00-14.30 : Welcome; outline of the course  
Mario Maas
- 14.30-15.15 : Pathophysiology of Fabry disease  
Carla Hollak
- 15.15-16.00 : Clinical spectrum of Fabry disease  
Gabor Linthorst
- 17.00-22.00 : Drinks and dinner

## **Provisional programme 27 January 2012**

- 09.00-09.15 : Pre test
- 09.15-09.45 : Neurological manifestations in Fabry disease  
Marieke Biegstraaten
- 09.45-10.15 : Cognitive decline and depression in Fabry disease  
Andreas Fellgiebel
- 10.15-10.45 : Coffee break
- 10.45-11.15 : CNS manifestations in children with Fabry disease  
Michael Beck
- 11.15-11.45 : Imaging of cerebral manifestations including MRI-DTI in Fabry disease  
Leonardo Vedolin
- 11.45-12.15 : Basilar artery diameter as a potential screening tool for Fabry disease  
Andreas Fellgiebel
- 12.15-13.15 : Lunch
- 13.15-14.45 : Case histories, interactive session
- 14.45-16.15 : Computer based learning  
Leonardo Vedolin
- 16.15-17.00 : Post test: clinical decision making (contest!)
- 17.00 : End of the course; evaluation forms and certificates
-

---

SPHINX, the Amsterdam Lysosome Center was founded in 2008 by the departments of Medical Biochemistry, Internal Medicine, Paediatrics and Radiology, formally establishing a platform for clinical and scientific collaborations on lysosomal storage disorders at the AMC.

SPHINX aims to integrate clinical and preclinical research as well as multidisciplinary care and education, in order to improve diagnosis, treatment and knowledge of lysosomal storage disorders. As part of their educational program, SPHINX offers training courses and expert meetings. Sponsors can take advantage of these courses by contracting SPHINX through an unrestricted educational grant.

The 2012 course "Cerebral manifestations in Fabry disease" is sponsored by unrestricted educational grants from Genzyme Nederland and Shire HGT.